



**GUNTHER  
CIVIL**

PTY LTD



# CAPABILITY STATEMENT



2023





# TABLE OF CONTENTS

Welcome Message	03
Company Background	04
Civil Design & Construction	05
RPA & Machine Control	06
Project Management	07
Civil & Geotechnical	08
Mining & Civil Infrastructure	09
Our Projects	10
Quarry Products	12
Crushing & Screening	13
Plant & Labour Hire	14
Plant & Equipment	15





## WELCOME MESSAGE

I'd like to personally thank you for your interest in Gunther Civil Pty Ltd and our capacity to assist on your next project.

My vision when starting Gunther Civil was to respond to the ever-changing and unique projects within the civil and mining infrastructure industries and create a service offering that is consistent and dependable; yet agile and dynamic enough to flex and extend beyond client expectations.

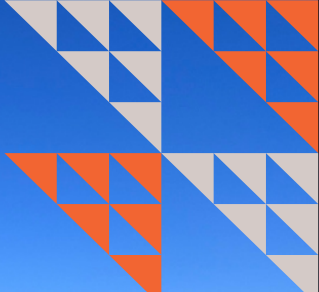

Our business continues to grow; in the size and scope of projects that we accept and diversity of capabilities that we deliver. At every opportunity we look to foster innovation, enhance sustainability and improve performance across our operations. We invest heavily; both in time and financially, in training and supervision to develop our blue and white collar workforce to be competent, reliable and forward thinking.

I welcome you to discuss your requirements with us, and look forward to working with you on your next project.

**Anthony Gunther**

MANAGING  
DIRECTOR





In 2016 Coolgarra Contracting and CK Quarries was acquired, enhancing Gunther Civil's service offerings to include mobile crushing, sorting and screening as well as the supply and delivery of a broad range of aggregate and quarry materials from our North Queensland location.



## COMPANY BACKGROUND

Gunther Civil Pty Ltd is a privately owned, Australian based, multi-disciplined civil engineering contractor. Established in 2011 in Karratha (Pilbara, WA) now with operational bases also in Lake Macquarie (NSW) and Mount Garnet (QLD), we have the ability to mobilise throughout remote, regional or metropolitan locations across Australia. Our breadth of experience and local knowledge supports our capacity to engage in most sectors of civil engineering construction.

Gunther Civil is committed to achieving project deliverables. We strive to understand each organisation's culture, goals, objectives and requirements in order to align our project specific approach. We work together to ensure success for all stakeholders with a vision to deliver projects within quality, time and budget constraints.

Gunther Civil deliver on this commitment by utilising a highly devoted and skilled team lead by Anthony Gunther; our hands on Managing Director. This is supported by following an Integrated Management System (IMS) to ensure our operations comply with the requirements of ISO AS 45001, ISO AS 14001 & ISO AS 9001, internal standards and project specific requirements.



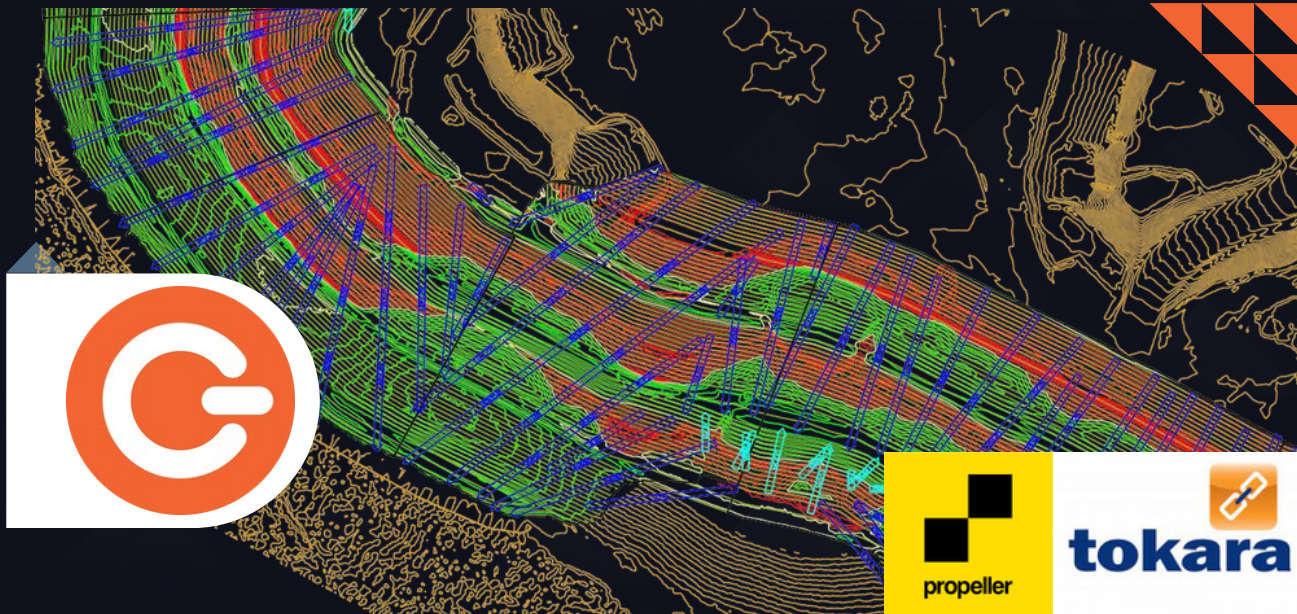
# CIVIL DESIGN & CONSTRUCTION



Gunther Civil has extensive experience in the delivery of projects to private developers and individuals. We provide land levelling, clearing and grubbing, private road construction and subdivision development services. This includes in-house survey and design works to ensure your project goals are achieved. Gunther Civil has the ability to provide planning, engineering and management for civil infrastructure projects. With our key speciality areas being:

- Bulk and detailed earthworks
- HDPE lining
- Concreting
- Drill and Blast
- Wastewater and Pipelines
- Powerline construction
- Earthing
- Foundations
- Foundations
- Retaining Structures
- Bridge abutments
- Roadworks, rail and conveyor alignments
- Marine and Port works
- Subdivisions





# RPA & MACHINE CONTROL CAPABILITIES

Gunther Civil has the internal capability to deliver site based and remote survey services by our Registered Surveyors. Gunther Civil have been early adopters of state-of-the-art innovation in survey and machine control giving our clients enhanced access and control to real time data via our Trimble Propeller Aero portal.

Our survey technology profile:

- Has reduced large site pick up data processing from >1 week to less than 24hrs
- Allows us to update whole of fleet survey and design files in synchronicity
- Provides machine operators with optimal push volumes and directions to eliminate rework, drastically improving machine/labour efficiency
- Utilises RPAs (Drones) and a software package to analyse site data and provide high-accuracy measurements and volumes

Gunther Civil is a CASA Registered organisation and holds all required accreditations, competencies and licences for commercial RPA operations.



**Australian Government**  
**Civil Aviation Safety Authority**





# PROJECT MANAGEMENT



Gunther Civil bring the highest level of commitment and management skills and techniques to each project through experienced project leaders, skilled staff and effective delivery of projects. Our aim is to keep all stakeholders informed of progress against program, cost, budget and safety and where necessary; make the hard decisions.

With the requisite experience, our project managers maintain a customer focus while managing execution from scope to completion based on the following core competencies:

- Scheduling
- Stakeholder Management
- Risk and Issue Management
- Cost Management
- Resource Management
- Quality Management
- Procurement Management

**Gunther Civil is currently undertaking a digital transformation project to further intergrate our Project Management, Procurement, Plant Maintenance and administration systems.**







# CIVIL & GEOTECHNICAL ENGINEERING

Employing in-house engineers, Gunther Civil provides design and consulting services for civil and geotechnical engineering. The holistic approach to our design services provides our clients with a personal and innovative solution. We pride ourselves on aligning design strategy to the specific needs of our client while maintaining a focus on practical constructability.

We are able to identify and understand the geotechnical issues and hazards on-site in order to optimise design and construction while minimising the risk of potential financial loss, damage to property or threat to life.

Our engineering services include but are not limited to:

- Desktop studies and ground investigations
- Foundations and retaining walls
- Slope stability studies
- Resource development engineering
- Seismic engineering
- Earthworks – bulk and detailed
- Energy
- Road and rail
- Hydrogeological







# MINING & CIVIL INFRASTRUCTURE

We have strong expertise in the delivery of mining and civil infrastructure. Some of the current projects Gunther Civil have been involved with include:

**2023**

**Gimberts Rd Industrial Precinct - Morisset NSW**

**\$15M+**

Gunther Civil is currently developing the 24ha greenfield project situated between Sydney and Newcastle. The site is adjacent to the M1 Motorway, with upgrades to commence shortly giving the site B Double access.

Gunther Civil has managed all aspects of the project right through from planning and approvals prior to commencing works. The scope includes bulk and detailed civil works, service tie ins, landscaping and vegetation management and road construction.

The project has a likely duration of over 5 years as the scope continues to grow to include commercial and industrial builds to populate the estate.





# OUR PROJECTS



**2021-2022**

## **Kaban Green Power Hub - Kaban - North QLD** **\$16M**

Gunther Civil was appointed by the earthworks contractor MPC Kinetic under head contractor Vestas to provide labour, plant hire and professional services throughout the early works and construction phases of the Project.

Additionally Gunther Civil provided mobile onsite crushing and screening services for the production of construction materials on site. Specialist products were supplemented by the Gunther Resources Quarry.

**2020-2021**

## **West Angelas Mine Waste Deposits Rehabilitation** **Client: Rio Tinto - Western Australia** **\$8M**

Gunther Civil successfully tendered with an established Western Australian Indigenous business to deliver mine waste dump rehabilitation works to Rio Tinto's West Angelas mine. The JV was then awarded a second stage of works for the high performance of the project and standard of works. The project works entailed bulk push with a fleet of D11 dozers, all equipped with semi-autonomous machine controls, to reshape the historic waste dumps to create a benched profile that was then ripped and seeded to encourage native vegetation regrowth.



**2021 - Ongoing**

## **Sugarbag Hill Quartz Mine - Forsayth - QLD**

Sugarbag Hill is a quartz resource near Forsayth in QLD. Gunther Civil is working with High Purity Quartz Ltd to develop this greenfield site and establish Australia's first high purity quartz source. The mined material is the oldest known silica deposit; with unmatched purity.

Gunther Civil's role in this project is to make the rugged, remote terrain accessible, establish camp and workshop facilities and amenities then commence site based crushing and loadout for export.

The site is to start lump product production in 2024 and Gunther Civil will continue operations seasonally.





# OUR PROJECTS

*Below is a portfolio of just some of our projects. These 6 projects have been selected to demonstrate the diversity of the capabilities of Gunther Civil, the environments in which we thrive and an indication of our capacity to meet stringent requirements of governments and Tier 1 Public Companies.*



## Ootann Rd Realignment QLD

2019  
TABLELANDS REGIONAL COUNCIL  
\$2.4M

Realignment and widening of 5km of critical road infrastructure in Far North QLD. The project involved sensitive works around areas of cultural heritage significance. The project was conducted under live traffic of predominantly heavy vehicles. Project scope included full road formation construction, installation of 8 culvert crossings, landholder driveway construction, sealing and road furniture.

## Cherbourg Waste Water Treatment Plant

2017-2018  
QLD DILGP  
\$6M

Construction of 7 lined ponds and associated pipeworks, landscaping, fencing and access roads for the development of waste water facilities in Cherbourg Indigenous community. The project well exceeded indigenous employment and training targets set by DILGP.



## MGT Minerals TSF, Mill and Camp Refurb - QLD

2019 - 2020  
MGT MINERALS  
\$3M

Refurbishment of tin processing plant to contemporary standards including structural concrete design, structure erection, plant installation and commissioning. New overflow and clearwater ponds were constructed and lined, and existing mill pond refurbished and lined. Professional services included approvals from Resources and Environment departments to allow recommencement of mining onsite.



## Nanyetta Park Station Upgrades - QLD

2016 - ONGOING  
NANYETTA PARK STATION  
\$2M

Upgrades of station infrastructure including boundary fencing, construction of modern 11 man camp, water infrastructure, broadacre irrigation, workshop facilities, shed construction, fire breaks and land management. This project seeks to enhance the carrying capacity of this savannah country station and improve self-reliance in extensive beef production. This primary production operation continues to be managed by Gunther Civil.



## Beresfield Business Centre NSW

2017-2018  
BERESFIELD BUSINESS CENTRE  
\$3M

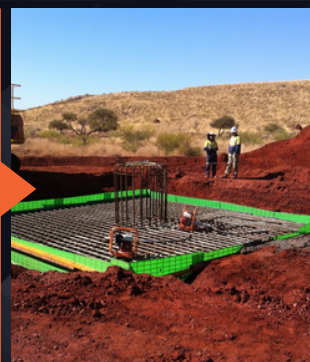
Industrial subdivision works package that included bulk import of fill material, full formation cul-de-sac construction, kerb, landscaping and streetscaping. This project involved works to rehabilitate a sensitive riparian corridor in Viney Creek which was revegetated and a high-flow channel constructed for downstream flood mitigation.

## Coastal Waters Project WA

2016  
RIO TINTO IRON ORE  
\$3M

Gunther Civil completed a variety of works packages including:

- Construction of 42km of access tracks
- TPS Culvert installation
- Detailed earthworks
- Installation of underground services
- Installation of mass reinforced concrete foundations
- Case bored piles up to 20m deep
- Compliance to Tier 1 contractor requirements







# QUARRY PRODUCTS

Gunther Resources Pty Ltd (Previously CK Quarries) operates from its quarry site near Mt Garnet in Far North Queensland. Our product offerings includes road base, aggregates, landscaping rock, sand, and crusher dust. Supplying Main Roads, Local Councils, Local Companies and the General Public.

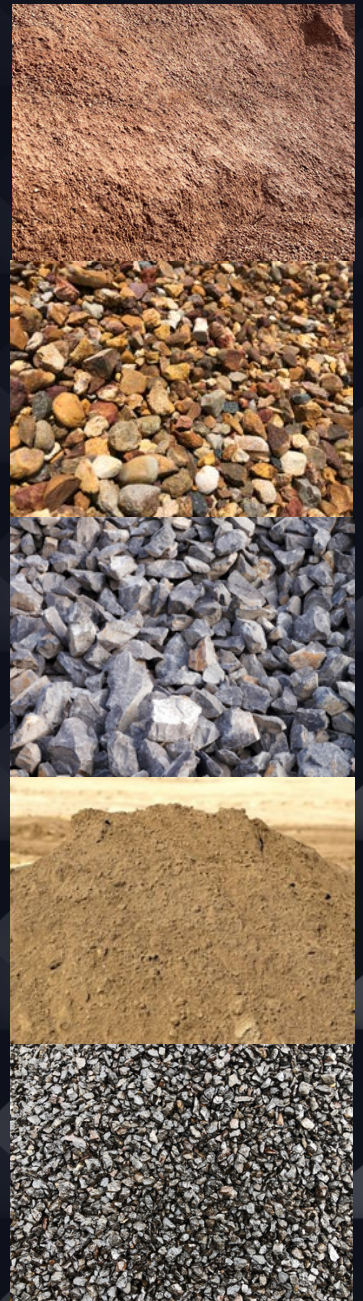
Our high quality Andesite/ Intermediate Igneous source rock combined with modern machinery and experienced staff ensures the highest levels of quality and customer service delivering successful outcomes to our clients.

Gunther Resources is fully licenced and a registered supplier to QLD Transport and Main Roads.

## QUARRY MATERIALS\*

- Type 2.1
- Type 2.2
- Type 2.3
- Type 2.4
- Type 2.5
- General Fill
- Aggregate 7mm
- Aggregate 10mm
- Aggregate 14mm
- Aggregate 16mm
- Aggregate 20mm
- Trench Rock (40-120mm)
- Crusher Dust
- Rock 150-300mm
- Rock 300-500mm
- Rock 0.5-1.0m
- Mattress rock 75-150mm
- Sand fine
- Sand course
- Custom Spec (as required)

\*Specification information available upon request.







# MOBILE CRUSHING & SCREENING

Gunther Civil has invested in quality materials, equipment, and systems to complement our professional, hardworking staff guaranteeing our ability to offer the highest levels of quality and customer service at competitive rates. Gunther provides mobile crushing services throughout remote locations in Australia.

At Gunther Civil, we train our fitters and machine operators in safe working methods to ensure that fulfil zero harm.

The delivery and execution of our crushing projects is completed through our project management strategy to deliver the highest quality standards and completion to specification.

Whatever your site crushing requirements, we are equipped to handle the job, please contact us for information on how we can assist you with your upcoming crushing requirements.

## ***Services include:***

- ***Crushing and Screening (Rock, Recycled Aggregates)***
- ***Ripping, Sorting and Pushing material.***
- ***Stockpile Management and Conditioning of Materials***
- ***Cartage and Haulage***



# PLANT & LABOUR HIRE

Whether you are looking for short or long term heavy equipment hire, Gunther Civil offers flexible options tailored to suit your needs. Our equipment is available wet, dry or customised to your project requirements.

Our comprehensive fleet is backed by trained and qualified fitters and supported by our knowledgeable staff.

We offer a wide range of equipment including:

- Articulated Dump Trucks (40t – 50t)
- Compactors (30t)
- Concrete Batch Plants
- Crusher (Cone & Impactor)
- Dozers (D7-D10 sized)
- Excavators (4t – 50t)
- Loaders
- Graders (140/16 size)
- Low Loaders
- Pumps (3" – 6")
- Primer Movers
- Rollers (12t – 15t, Padfoot/Smooth)
- Screens
- Service Trucks
- Water Carts



Gunther Civil is capable of supplying a package of equipment and can also source equipment outside of the above list. All equipment is maintained to OEM requirements and service records are provided upon commencement of hire.

Our specialised labour force have industry qualifications in Mobile Plant Operation, HDPE Welding, Lining and Testing, Concreting, Steel Fixing, Drainage, High Risk Work Activities, Asbestos Removal, Engineering and Project Management. We are able to service Far North Queensland, Newcastle/Hunter Valley and regional Western Australia.



# PLANT & EQUIPMENT LIST

- Caterpillar D10R Dozer
- Caterpillar D8T Dozer
- Caterpillar D6N Dozer
- Caterpillar D5K XL Dozer
- Komatsu D155AX Dozer
- Caterpillar 140M Grader with Machine Automation
- Doosan 480LC Excavator
- Caterpillar 329D Excavator w. attachments
- Doosan 225LC Excavator w. attachments
- Caterpillar 304D Excavator w. attachments
- 6 x 25-50t Articulated Dump Trucks
- 2 x 35 000L Articulated Water Carts
- Portable accommodation blocks
- Portable office buildings
- Lighting Plants
- Onsite power generation
- Portable Traffic Lights
- Caterpillar 980K Loader
- Volvo L250G Loader w. Loadrite
- Volvo L180E Loader w. Loadrite
- Olympus 638HD Loader
- Caterpillar 938K Loader/ IT
- John Deer 325G Track Loader w. attachments
- Various rollers including padfoot (2), smooth drum and multi-tyre
- Mack 11kL Service Truck
- Acco 8kL Service Truck
- Hino 12kL Watercart
- Isuzu 12kL Watercart
- EWP/ Scissor lifts
- 6 Wheel tipper
- Mack Truck & Dog
- Prime Movers and Floats
- Nufab Blast Rig
- Terex 1550 Cone Crusher
- Terex 1175 Jaw Crusher
- Terex 883 Scalper
- Fintec 542 Screen
- Various conveyors and stackers w. Loadrite







# CONTACT INFORMATION

Connect  
With Us!



+61 458 014 113 - Administration



+61 405 414 157 - Anthony Gunther



[admin@gunthercivil.com.au](mailto:admin@gunthercivil.com.au)



[www.gunthercivil.com.au](http://www.gunthercivil.com.au)

